



# TIN LIZZIE GAZETTE



Volume XIX

April 2023

ISSUE No. 4

Last month's homework assignment was to send in a picture of your T to share with the group. Ray stepped right up with a very nice picture of Miss Betty, their gorgeous 1923 touring car.



Pete must have had a feeling that this winter was going to be light on the snow as he set his beautiful couple up for plowing! More about Pete's T inside.



Heard about town, or, Upcoming events.

We have three upcoming school events, so if you can put any of the dates on your calendar it would be great!

April 28<sup>th</sup>: Ellis Tech.

May 12<sup>th</sup>: Norwich Tech.

May 26<sup>th</sup>: Windham Tech

April 2<sup>nd</sup> Stafford Motor Speedway spring auto swap meet

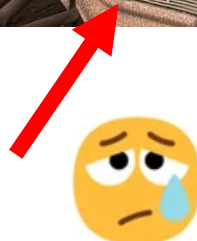
April 8<sup>th</sup> Annual Yankee spring picnic, 544 Amston Rd, Colchester

April 15<sup>th</sup> & 16<sup>th</sup> Brooklyn Fairgrounds swap meet

April 28<sup>th</sup> The soup bowl @ Parish Hill High school (be there by 4:30)

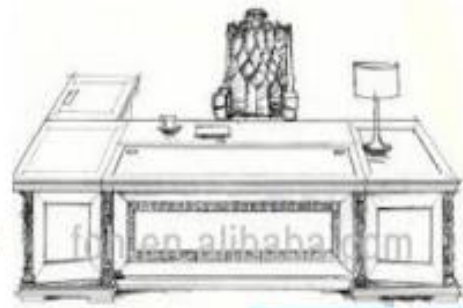
April 30<sup>th</sup> Belltown show & swap meet, Fireman's field, Salmon River State Forest, East Hampton

May 6<sup>th</sup> & 7<sup>th</sup> Zagray Farm Museum Spring Show & Swap Meet, 544 Amston Road, Colchester





## Presidents report APRIL 2023



Hello Friends & Members,,

I was very pleased and happy to see and welcome 15 members and 2 guest. One took a membership app. . Hope to see him as a member.



We heard from Pete on the progress of the Cut-A-Way adventures. This year so far the three Tech Schools are Norwich,,Tech,,Windham tech, and Ellis Tech., They were all glad to hear from us. The dates that were discussed were not confirmed till the club was told and we all agreed the dates were good. The dates are **May, 12 for Norwich Tech., Windham Tech,May 26, and Ellis tech,Danielson,April,28. The Ellis tech should not be a problem going to the soup bowl.**  
== Ellis -we will meet at 11:00 and out by 1 or 2 PM.==

As far as the snow is on our mind Pete has the ideal remedy



Marty brought in a display of two Ford carbs 94's in a case Marty made.-- looked like a cabinet maker did. Good work Marty !!



In closing our thoughts are with,Harold,Anne,John And George King III on a quick recovery. They are all home thank Goodness.

Thinking of George King III there will be the **Concourse de Barnyard on Sunday, 15 October 2023.**

Save the date for the Lebanon Historical Society 2<sup>nd</sup> Saturday at the Museum will be on JUNE 10<sup>th</sup>.

I think I forgot something so watch for emails, if I remember what it was ??

Jack

Some of whats going on from the members

This could be something every once in a while. But we need your help. So send in about you or I will come to see you and take pictures



This is at Mac,s garage with Mo lending a hand. Yes it has 2 pedal That other thing is a gas pedal ?



Mac and Pete must know what the weather will be !! Both Mac & Pete are taking off there plows.



If you have a oil leak by the starter and think it is the gasket , Guess again and check under the metal ban that's over the brushes.

Langs sells a starter gasket kit that goes on the amateur shaft. It is a three piece but needs to be machined.

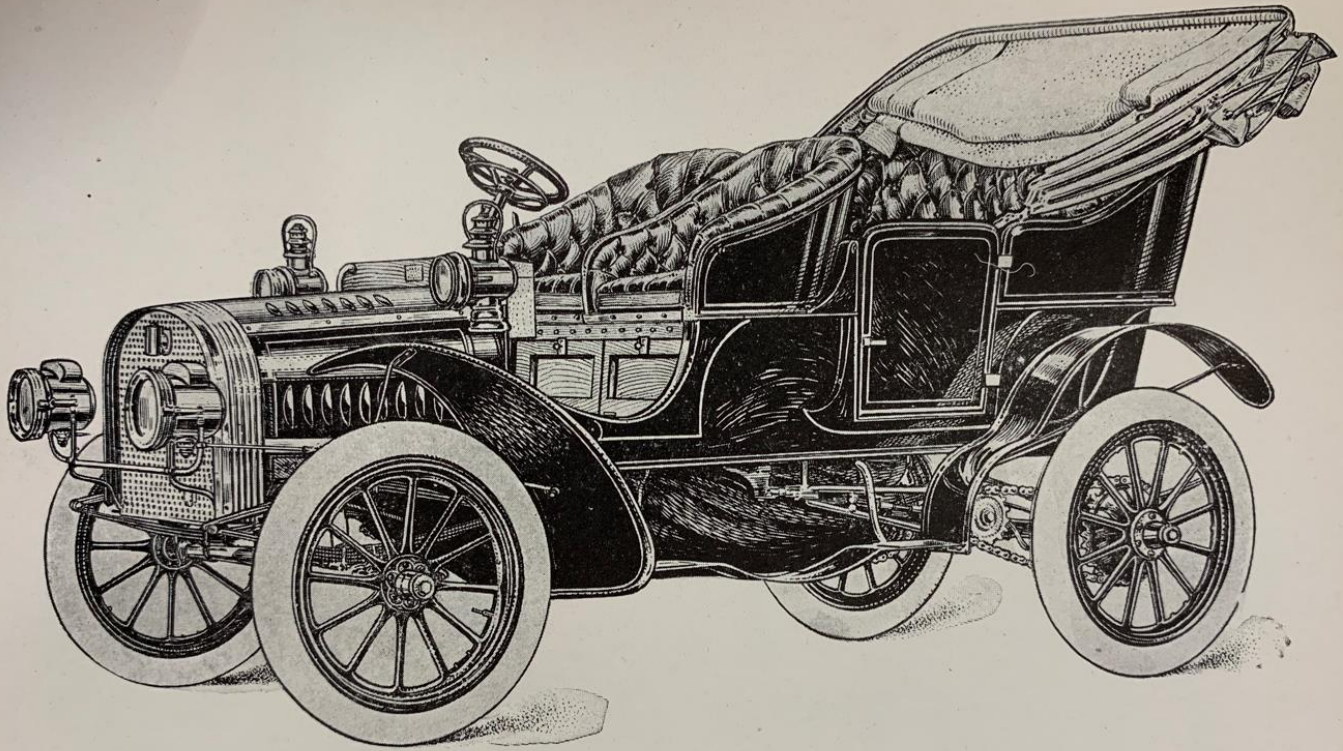


See were it says Jacks Garage, well, it should say pain in the a%##.

This starter looks so innocent but made me buy lunch for the machine work. Its on and works More to come next month.



# Cyclopedia of Engineering



SURREY TYPE AUTOMOBILE WITH 20 H.P. TWO-CYLINDER HORIZONTAL ENGINE.  
Thomas B. Jeffery & Company,

drive, free from needless friction and is considered quite advantageous. In some forms, two of the sliding gears are on one side and two on the other. This, of course, requires two shifting forks in its operation. Other forms employ a shifting fork for each gear and a selective means

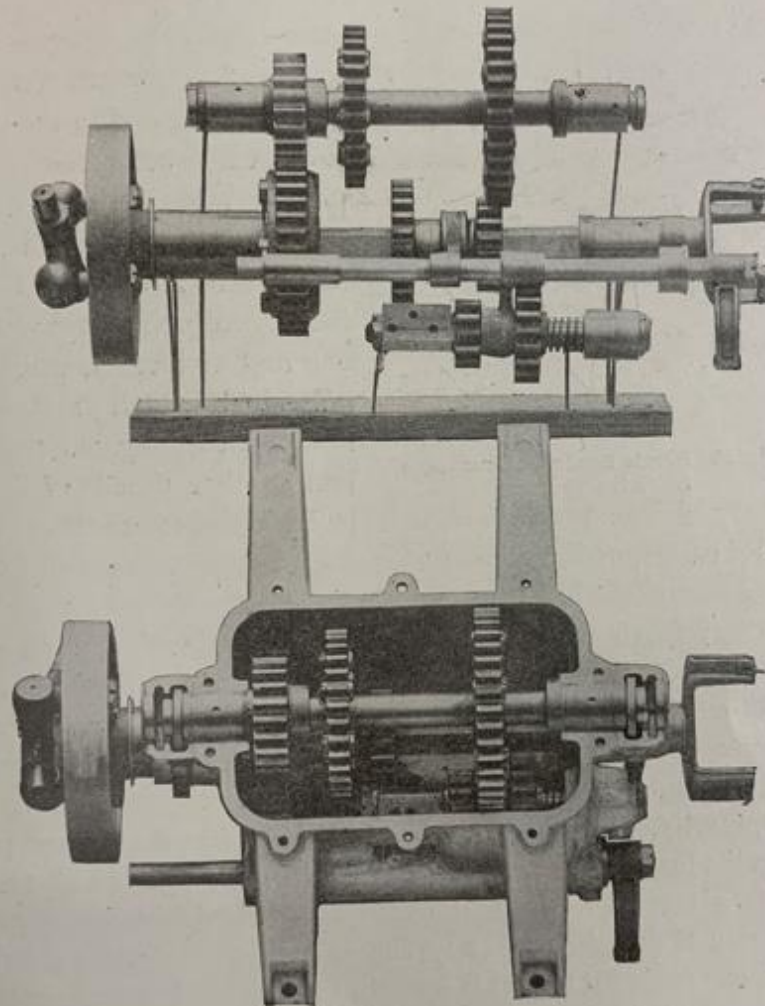


Fig. 28. Sliding Gear Transmission.

of engagement by which the operator can cause the single shifting lever to engage any desired fork, and thus put into operation any gear which is brought out of operation as the lever passes to neutral, where it is again ready to engage any desired gear.

The objections made to the sliding gear device is that this method of meshing gears is unmechanical, wears the gears rapidly, is likely to break them, and the means of shifting is much slower and therefore less safe and handy than the individual clutch or the planetary systems. It is argued, for example, that in the sliding gear the operator must withdraw the clutch, then withdraw the gear, then shift the gear lever,

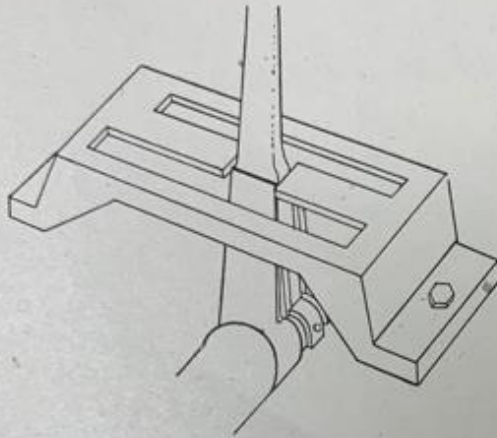


Fig. 29. Single Lever Quadrant, Selective Type.

then cause it to engage a different gear and finally complete the operation by letting in the clutch—a total of five movements. In the planetary device the same motion that withdraws the high clutch will, if continued beyond the neutral point, engage the low one and vice versa, while in the individual clutch system one movement disengages the clutch and another, usually of the same lever, engages another clutch,

with its corresponding gears; at most two movements, and in many forms accomplished by a single movement.

The importance of quick action in a crowded street or on a steep hill can hardly be overestimated, particularly since motor vehicles are rapidly-moving devices and but little time can be allowed for the performance of any simple function like speed changing. In spite of this disadvantage, however, the sliding gear seems to be increasing in popularity, which is probably due to the fact that many people regard the foreign vehicles as superior to the American, and the sliding gear is a foreign device. It seems also probable that the greater simplicity of the sliding gear system as compared with the individual clutch has caused it to find favor with the makers, to whom simplicity means cheapness, and who are not so much concerned as to whether or not it is most easy to operate. The simple device is not only cheapest for the manufacturer but it is generally more easily understood and maintained by the owner, and should, if other things are reasonably near equal, be given preference.

**Friction Gear.** The friction gear, although but little used, is an exceedingly old form. It was probably the first form in the thought of



**FOUR SEASONS MODEL 'T' ASSOCIATION**  
**2023 MEMBERSHIP REGISTRATION**



**MAKE CHECKS PAYABLE TO PETER SMITH**

MAIL TO; Peter Smith  
167 Daleville Road  
Willington, Ct. 06279

NAME;

ADDRESS;

TOWN;

ZIP;

EMAIL ADDRESS;

If your email address is on file enter same.

**NOTE** Are you a member of **THE MODEL T FORD CLUB of AMERICA**  
PLEASE circle one-----YES-----No---Member #

**2023 FSMTA Chapter Dues \$15.00**



Please List Your Vintage Vehicle (S) Below

Make \_\_\_\_\_ Model \_\_\_\_\_

Body

Style \_\_\_\_\_ Year \_\_\_\_\_

Number of

Cylinder \_\_\_\_\_ HP. \_\_\_\_\_

Make \_\_\_\_\_ Model \_\_\_\_\_

Body Style \_\_\_\_\_ Year \_\_\_\_\_

Number of

Cylinder \_\_\_\_\_ HP. \_\_\_\_\_

